

PolySep™-GFC-P

Aqueous GFC Columns for the Separation of Polymers, Proteins and Peptides

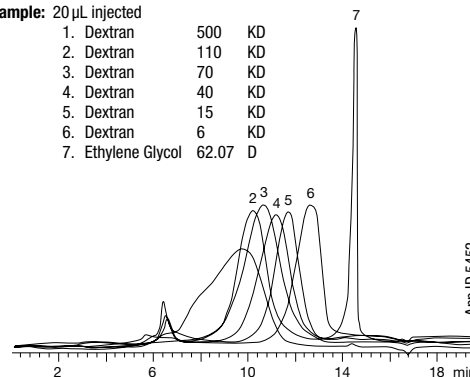
- Highly hydrophilic synthetic polymer phase
- Suitable for water-soluble polymers
- Very low nonspecific interaction with the separation matrix
- Extremely cost-effective
- High efficiencies
- Good mechanical strength

The PolySep material undergoes rigorous quality control tests, from the initial stages of testing of the starting monomers to the final product. There are at least 25 steps of quality assurance during the entire procedure. The packed column then undergoes at least five additional tests, including a batch test for the manufactured materials. Each column is then tested for column efficiency and peak symmetry and ships with a QC chromatogram. This ensures long-lasting columns with very high efficiencies.

Dextran

Column: PolySep-GFC-P4000
 Dimensions: 300 x 7.8 mm
 Part No.: 00H-3144-K0
 Mobile Phase: Water
 Flow Rate: 0.8 mL/min
 Detection: RI
 Sample: 20 µL injected

Peak	Compound	MW (KD)
1	Dextran	500
2	Dextran	110
3	Dextran	70
4	Dextran	40
5	Dextran	15
6	Dextran	6
7	Ethylene Glycol	62.07



App ID 5452

PolySep-GFC-P Technical Data and Specifications

Phase:	1000	2000	3000	4000	5000	6000	Linear
Exclusion Limits in Daltons:							
PEG	2 x 10 ³	9 x 10 ³	5 x 10 ⁴	2 x 10 ⁵	2 x 10 ⁶	1 x 10 ⁷	1 x 10 ⁷
Pullulans	3.5 x 10 ³	1 x 10 ⁴	1 x 10 ⁵	3.5 x 10 ⁵	4 x 10 ⁶	2 x 10 ⁷	2 x 10 ⁷
Separation Range (Da)	20 - 3 K	100 - 10 K	250 - 75 K	3K - 400 K	50K - 2 M	100K - 15 M	1 K - 10 M
Typical Efficiency Plates/meter	22,000	50,000	32,000	32,000	32,000	32,000	32,000
Maximum Organic Modifier:							
Methanol	20%	95%	70%	70%	70%	70%	70%
Acetonitrile	20%	70%	70%	70%	70%	70%	70%
pH Range	3.0 to 12.0						
Maximum Flow Rate	Depends on backpressure, do not exceed 1000 psi						
Column Hardware	Stainless steel or PEEK (Biocompatible hardware available upon request)						
Temperature	4 to 60 °C						
Maximum Salt	Maximum allowed 0.5 M with a flow rate not to exceed 0.5 mL/min						
Storage	For overnight, pump water at 0.2 mL/min, for longer storage use 0.05 % NaN ₃ in water or 10 % methanol in water						
General	A guard column is recommended to improve column life						

Ordering Information

Stainless Steel Columns (mm)

Phases	Analytical 300 x 7.8	Guards 35 x 7.8
1000	00H-3141-K0	03Q-3248-K0
2000	00H-3142-K0	03Q-3248-K0
3000	00H-3143-K0	03Q-3248-K0
4000	00H-3144-K0	03Q-3248-K0
5000	00H-3145-K0	03Q-3248-K0
6000	00H-3146-K0	03Q-3248-K0
Linear	00H-3147-K0	03Q-3248-K0



For additional GFC Columns, see p. 309



For HPLC Column Heater (25-90 °C), see p. 366

PrimeSphere™

- For Availability and Ordering Information please contact your Phenomenex Technical Consultant.